

Volume 5 • Issue 1 • May / June 2014

Editor-in-Chief
Professor Rajab Chaloo

INTERNATIONAL JOURNAL OF
APPLIED SCIENCES (IJAS)

ISSN : 2180-1258

Publication Frequency: 6 Issues / Year

CSC PUBLISHERS
<http://www.cscjournals.org>

Copyrights © 2014 Computer Science Journals. All rights reserved.

INTERNATIONAL JOURNAL OF APPLIED SCIENCES (IJAS)

VOLUME 5, ISSUE 1, 2014

**EDITED BY
DR. NABEEL TAHIR**

ISSN (Online): 2180-1258

International Journal of Applied Sciences is published both in traditional paper form and in Internet. This journal is published at the website <http://www.cscjournals.org>, maintained by Computer Science Journals (CSC Journals), Malaysia.

IJAS Journal is a part of CSC Publishers

Computer Science Journals

<http://www.cscjournals.org>

INTERNATIONAL JOURNAL OF APPLIED SCIENCES (IJAS)

Book: Volume 5, Issue 1, May / June 2014

Publishing Date: 01-06-2014

ISSN (Online): 2180-1258

This work is subjected to copyright. All rights are reserved whether the whole or part of the material is concerned, specifically the rights of translation, reprinting, re-use of illustrations, recitation, broadcasting, reproduction on microfilms or in any other way, and storage in data banks. Duplication of this publication of parts thereof is permitted only under the provision of the copyright law 1965, in its current version, and permission of use must always be obtained from CSC Publishers.

IJAS Journal is a part of CSC Publishers

<http://www.cscjournals.org>

© IJAS Journal

Published in Malaysia

Typesetting: Camera-ready by author, data conversion by CSC Publishing Services – CSC Journals, Malaysia

CSC Publishers, 2014

EDITORIAL PREFACE

This is *First Issue* of Volume *Five* of the International Journal of Applied Sciences (IJAS). IJAS is an International refereed journal for publication of current research in applied sciences. IJAS publishes research papers dealing primarily with the research aspects of Applied Sciences in general. Publications of IJAS are beneficial for researchers, academics, scholars, advanced students, practitioners, and those seeking an update on current experience, state of the art research theories and future prospects in relation to applied science. Some important topics covers by IJAS are agriculture, architectural, audio, automotive, military ammunition, military technology, military etc.

The initial efforts helped to shape the editorial policy and to sharpen the focus of the journal. Started with Volume 5, 2014, IJAS appears with more focused issues. Besides normal publications, IJAS intend to organized special issues on more focused topics. Each special issue will have a designated editor (editors) – either member of the editorial board or another recognized specialist in the respective field.

This journal publishes new dissertations and state of the art research to target its readership that not only includes researchers, industrialists and scientist but also advanced students and practitioners. IJAS seeks to promote and disseminate knowledge in the applied sciences, natural and social sciences industrial research materials science and technology, energy technology and society including impacts on the environment, climate, security, and economy, environmental sciences, physics of the games, creativity and new product development, professional ethics, hydrology and water resources, wind energy.

IJAS editors understand that how much it is important for authors and researchers to have their work published with a minimum delay after submission of their papers. They also strongly believe that the direct communication between the editors and authors are important for the welfare, quality and wellbeing of the Journal and its readers. Therefore, all activities from paper submission to paper publication are controlled through electronic systems that include electronic submission, editorial panel and review system that ensures rapid decision with least delays in the publication processes.

To build its international reputation, we are disseminating the publication information through Google Books, Google Scholar, Directory of Open Access Journals (DOAJ), Open J Gate, ScientificCommons, Docstoc, Scribd, CiteSeerX and many more. Our International Editors are working on establishing ISI listing and a good impact factor for IJAS. We would like to remind you that the success of our journal depends directly on the number of quality articles submitted for review. Accordingly, we would like to request your participation by submitting quality manuscripts for review and encouraging your colleagues to submit quality manuscripts for review. One of the great benefits we can provide to our prospective authors is the mentoring nature of our review process. IJAS provides authors with high quality, helpful reviews that are shaped to assist authors in improving their manuscripts.

Editorial Board Members

International Journal of Applied Sciences (IJAS)

EDITORIAL BOARD

EDITOR-in-CHIEF (EiC)

Professor. Rajab Chaloo
Texas A&M University
United States of America

ASSOCIATE EDITORS (AEiCs)

Dr. Nikolaos Kourkoumelis

University of Ioannina
Greece

Professor seifedine kadry

American University of the Middle East
Kuwait

EDITORIAL BOARD MEMBERS (EBMs)

Dr. Sullip Kumar Majhi

Indian Council of Agricultural Research
India

Dr. Srung Smanmoo

National Center for Genetic Engineering and Biotechnology
Thailand

Professor Naji Qatanani

An-Najah National University
Palestine

Dr. Shuhui Li

The University of Alabama
United States of America

Professor Vidosav D. Majstorovich

University of Belgrade
Serbia

Dr Raphael Muzondiwa Jingura

Chinhoyi University of Technology
Zimbabwe

Professor Jian John Lu

University of South Florida
USA

Dr Tadjine Hadj Hamma

IAV GmbH, Technical University Clausthal
Germany

Dr Raphael Muzondiwa Jingura
Chinhoyi University of Technology - Zimbabwe
Zimbabwe

Assistant Professor Chibli Joumaa
American University of the Middle East
Kuwait

Assistant Professor Dr. Adel Eldenglawey
South Valley University
Egypt

Assistant Professor M. Shahria Alam
The University of British Columbia
Canada

TABLE OF CONTENTS

Volume 5, Issue 1, May / June 2014

Pages

- 1 - 8 Correlation of Shallow Groundwater Levels with The Liquefaction Occurrence Cause By
May 2006 Earthquake In The South Volcanic-clastic Sediments Yogyakarta, Indonesia
Eddy Hartantyo, Kirbani Sri Brotopuspito, Sismanto, Waluyo

Correlation of Shallow Groundwater Levels with The Liquefaction Occurrence Cause By May 2006 Earthquake In The South Volcanic-clastic Sediments Yogyakarta, Indonesia

Eddy Hartantyo

*Geophysics Sub Department, Faculty of Math and Natural Sciences
University of Gadjah Mada
Yogyakarta, 55283, Indonesia*

hartantyo@ugm.ac.id

Kirbani Sri Brotopuspito

*Geophysics Sub Department, Faculty of Math and Natural Sciences
University of Gadjah Mada
Yogyakarta, 55283, Indonesia*

kirbani@yahoo.com

Sismanto

*Geophysics Sub Department, Faculty of Math and Natural Sciences
University of Gadjah Mada
Yogyakarta, 55283, Indonesia*

sismanto@ugm.ac.id

Waluyo

*Geophysics Sub Department, Faculty of Math and Natural Sciences
University of Gadjah Mada
Yogyakarta, 55283, Indonesia*

walgeof@yahoo.com

Abstract

When a large earthquake hit Yogyakarta in 26 May 2006, several liquefaction events occurred in some places in Yogyakarta and surrounding areas. Liquefaction event is strongly influenced by the depth of the ground water in the area, as well as several other parameters. This paper will conduct a qualitative correlation between the observational data liquefaction after the earthquake and the measured groundwater depth.

A total of 493 water-table depths were directly measured in the southern part area of volcanic-clastic sediment by using a measuring-tape meter. Fairly high correlation is shown between areas with shallow water depth and the position of occurred liquefactions. The average water depth for liquefied soil is 2.05 m. Almost 90% of the study area showed a high potential for liquefaction to occur.

Keywords: Earthquake, Liquefaction, Ground-water, Yogyakarta.

1. INTRODUCTION

Liquefaction is an event that occurs normally in sandy soil (non-cohesive sand), located in a water-saturated conditions, and the medium is subjected to ground vibration (cyclic stress movements) due to earthquake [1]. The sand skeletons will lose their effective stress and change into liquid / viscous [4],[5].

When the large earthquake hit Jogjakarta in the morning (local time) of 27 May 2006, several liquefaction events occurred in some places in Yogyakarta and surrounding areas [6],[7],[8]. The liquefactions phenomena were noted as ground surface cracks, especially new cracks that occur after the occurrence of the earthquake, the presence of sand-boil (slow sand-blast in some places

that usually forming successive lines), and the presence of water level changes in wells which bring silt deposition, sometimes reaching up to the surface of the well.

The observation points of these phenomena due to the earthquake in May 2006 [7] can be seen in Figure 1. The epicenter of Yogyakarta earthquake was located on the west Parangtritis beach (retrieved from BMKG -Seismological agency- as a red star). The distribution of occurred liquefactions (blue dots) and surface cracks (blue stars) are in line with surface faults. The most of liquefaction and crack lied to the west of main fault (located SW-NE east Bantul).

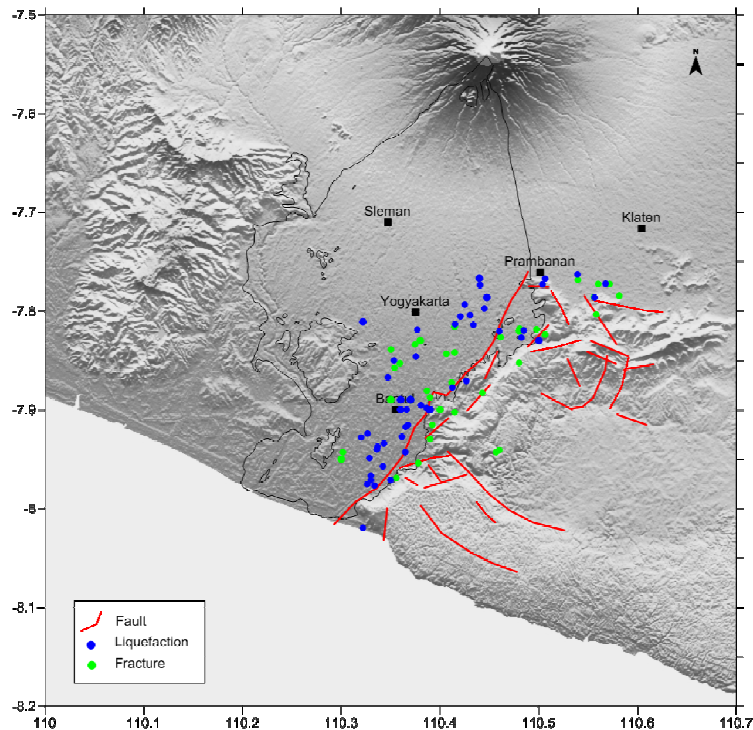


FIGURE 1: Map of observation points due to the occurrence of the 2006 Yogyakarta earthquake [modified from 6,7,8]. Blue dots and stars are liquefaction occurrences and cracks position respectively. Red star is the epicenter of the earthquake.

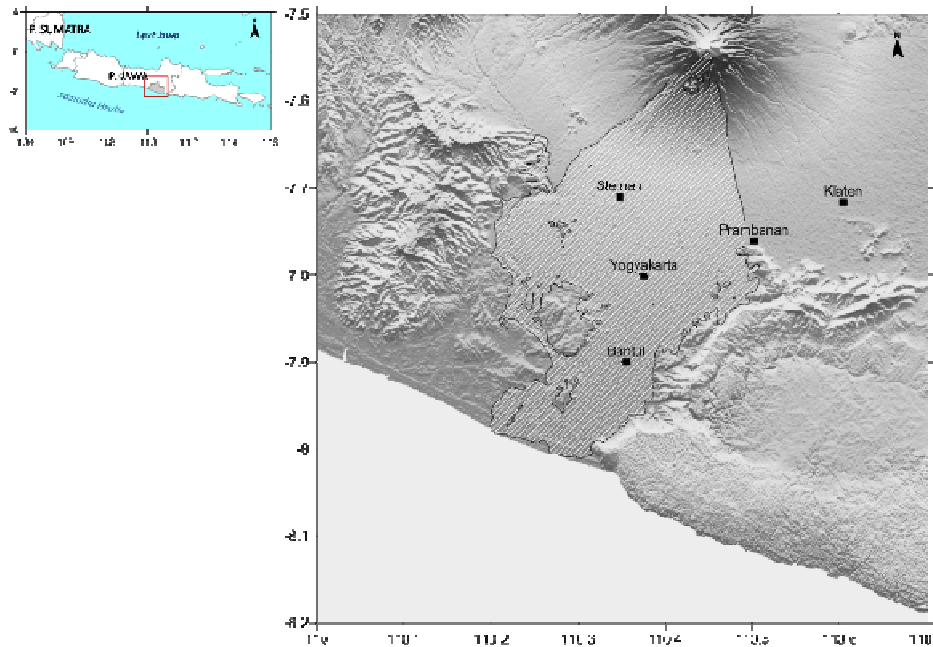


FIGURE 2: Map of volcanic-lastic sediment (light grey area) which covers an area of central Yogyakarta (modified from [2]).

Several observations [6],[7],[8] reported liquefaction occurrences phenomenon from surface which has the fine-grained sand layer, especially in Quaternary alluvial deposits. The structure type during observation reflects vein fractures or fissures whose size are varying between a few centimeters to a few meters and forms sand sediment exposure in the area.

The sand-water spout forming in adjacent area with diameters approximately 5-10 square meters. During their investigations, distribution of sand boils and ground fissures in the alluvial areas in Bantul graben are concentrated on the west side of the trending north-southwest Opak river fault with a length of approximately 30-35 km and turn towards the east around Gantiwarno subdistrict, Klaten, Central Java.

Based on the lithology of the area, central Yogyakarta was filled by Quaternary sediments as a result from of Merapi volcano activity (see fig 2). The type of soil to a depth of 30 meters from surface in this area consists of coarse sand, which moderate to poor gradation, and the grain size of the sand is included in the zone that allows the liquefaction [6]. In geohydrology term, this volcanic-lastic sediment has three layers of groundwater (aquifers) known as shallow, middle, and deep aquifers [9]. Shallow aquifer depths are varied and most of the water used by the community as a main water for family purposes. Most of the water depth is very shallow, especially found on the rivers banks of river which have headwater from Merapi volcano.

In this paper, we will assessed one of the important factors that affect the liquefaction, i.e. groundwater depth in the southern part of the volcanic-lastic sediments. Correlation and statistical processing of the liquefaction observation positions [7] and the depth of the watertable can be used to preliminary analyzing of the liquefaction occurrence for the next shallow earthquake.

2. METHODS

2.1 Data Acquisition

The depth of shallow groundwater measurements performed at the end of the rainy season in 2012, where the deposition took place in the area of Bantul regency dominated by loose sand

(unconsolidated sand). Deposition of this sediment is laid from Mount Merapi to the South Coast, which is bounded by Piyungan hills on the east side and Progo River on the West side [2].

The total number of measuring wells are 493. Distribution of the well-point measurements following the village's areas which still have open wells. These are clustered mainly in areas relatively far from urban areas. Measurement points are taken at open wells, so the depth of water table can be directly measured by using a tape meter.

In the northern part, the measurement is limited to the east and west of Mlati district. This restriction is consistent with the planned location of a major research thesis whose took area is in the southern part of Yogyakarta Province. North Sleman regency areas are relatively not affected directly by an earthquake in Jogjakarta which normally occurs around the Opak's fault.

On the East side, the measurement area bounded by Berbah and Prambanan districts, and to the south following the Opak and Oya rivers. On the western side, the study is limited by the Progo River. Measurement is not performed in the area of limestone hills in the Pandak district.

Measurements were made using simple equipment, such as; (a) Measuring tape, meter roll is used with a maximum length of 50 meters. This meter is used to measure the depth of the well from the surface of the water wells and measure the height of the lip edge of the well from the surface of the ground. (b) A Handy GPS, be used to locate and relocate the position of the measuring point. (c) Notebook, contains a data sheet that informs the position, height, depth of the water table, the location of the measurement, and the information associated with the measurement. (d) Field Guide, is used to locate and determine the points of measurement in the field.

2.2 Analysis

Analysis was performed by using the position map of the liquefaction observation in Figure 1 and groundwater depth map. The scenario is taken as follows; (1) creating the map contour which depths of water table, where there were liquefaction occurred, are below the average, (2) the map where 80% (percentile 80) occurred, and (3) map where all liquefaction data were used. These results are mapped as a function of the depth of ground water to show the consistency of water table depth and liquefaction occurrence.

3. RESULTS AND DISCUSSIONS

Water table depth map in the study area can be seen in Figure 3. It has seen that the area which has 7 to 12 m depth looks spots in the city of Yogyakarta and the North Ring Road, Mlati and surrounding districts, and a few places around the districts of Prambanan.

Areas that have shallow water table (less than 2 meters) covers the eastern part of the sub-district Sanden, Kretek, Bambanglipuro, Pundong, the town of Bantul, Jetis, Pleret, and Sewon. Sub-districts to the west of Yogyakarta city, covering; Kasihan, Sedayu, several locations in Moyudan, and West Godean also have shallow water table depth (less than 2 meters). Some places in the southern districts such as; Depok, Berbah and Piyungan also has a shallow water table depth.

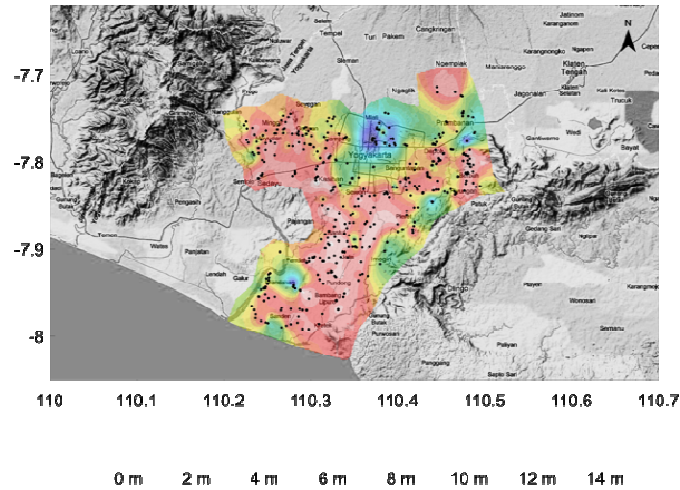


FIGURE 3: Water table measurement depth map. Black dot is the position of the measurement point.

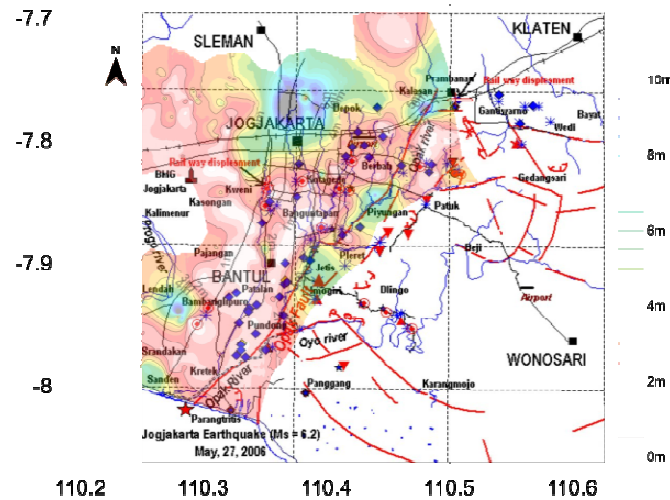


FIGURE 4: Overlay of fig 1 and fig 3. Qualitatively there are high correlation between reported liquefaction (blue diamond) and shallow water table (red area).

3.1 Overlay of Liquefaction Positions and Ground Water Level

Overlay of map in Fig 1 and Fig 3 can be seen in Fig 4. We can see good correlation between groundwater depths to the position marked by the occurrence of liquefaction. Good correlation occurs in the area of surrounding districts; Pundong, Patalan, Banguntapan, Berbah, Prambanan and Bambanglipuro. There are no liquefaction occurrences in areas with relatively deep water table; Jetis, North Imogiri, Piyungan, and the Yogyakarta city.

3.2 Classification of Liquefaction Based On Depth of Water

The analysis of groundwater depth is done only at liquefiable area plotted as a function of distance (in degrees) from the earthquake epicenter. Average value of the water depth is 2.05m (std 1.16m). This suggests that the average depth of ground water affecting liquefaction occurrence is very shallow (see red dotted line A in Fig 5). The green shaded area shows the maximum depth of the shallowest 80% of the data. The dashed red line B shows the maximum depth of all observation data.

Based on the pre-defined water table depth (<2.05m (A), <3m (P80), and <5.3 (B)), see fig 5, we then map the areas which have possibility to liquefy (see fig 6). Map of liquefaction potential with a mean value of 2.05m identified with dense-dot (area A). For this classification, the districts; Kretek, Bambanglipuro, Pundong, Patalan, Bantul, Banguntapan and Berbah, have higher potential due to liquefaction. Some parts of districts; Sedayu and Gamping, and some areas along Progo River also has a very shallow water table which means have to high liquefaction potentials.

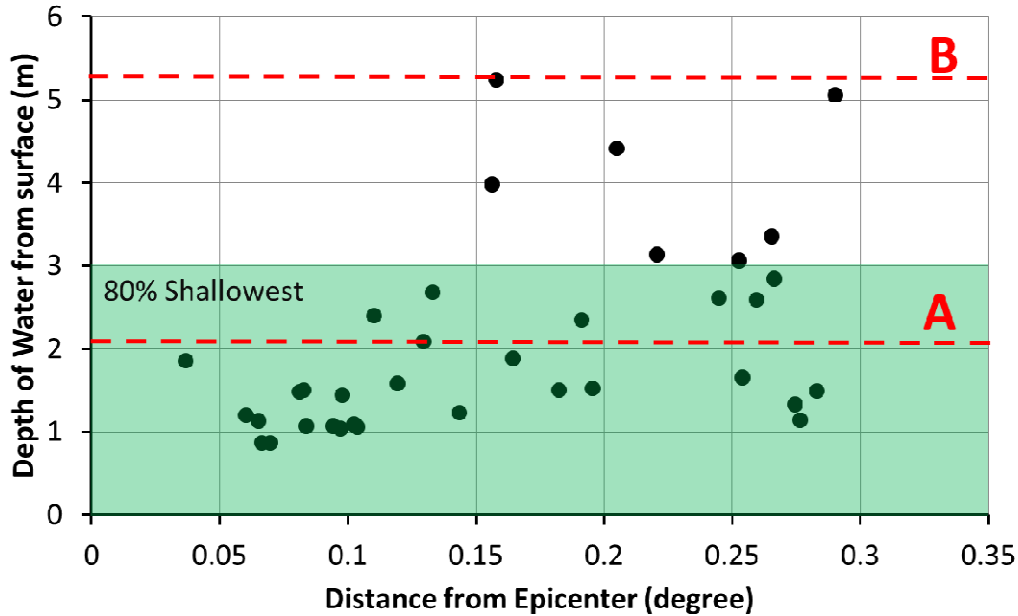


FIGURE 5: Water table depth plot of liquefaction observation from the epicenter (BMKG). Red dashed line A is the mean value (average), and line B is the maximum depth of the water table observations. The green area is the area of 80% shallowest (P80).

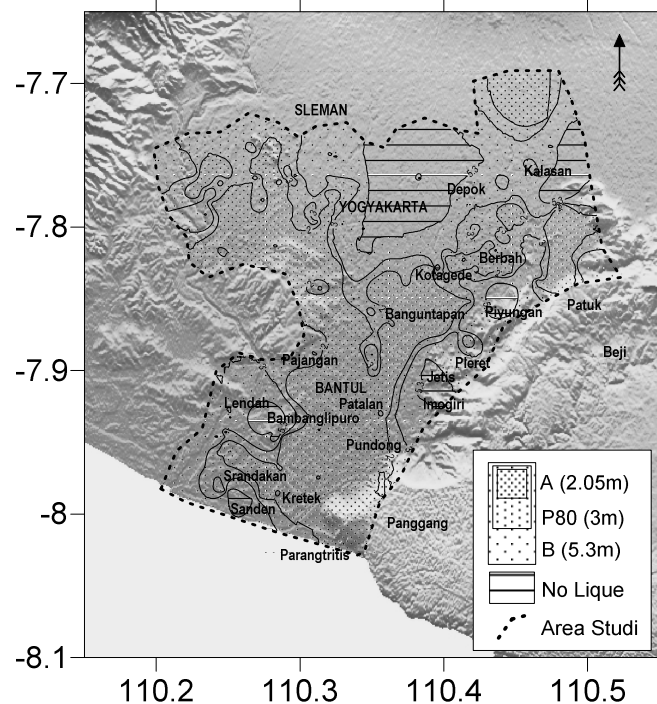


FIGURE 6: Contour map of possible liquefaction based on water table depth criterion.

For the second classification, which is about 80 % of the data observed to occur liquefaction (area P80), or about the depth of 3m or less, it includes areas of type A plus several districts, for example Berbah and Kotagede districts. This area already covers almost 65% of the study area.

For the worst classification (worst scenario), with a maximum water depth is estimated to occur liquefaction (area B, the maximum groundwater is 5.3 m), then almost the entire study area could potentially occurring liquefaction, except for the area of South part of Sleman regency and Yogyakarta city. Extent of area classification reached 90 % of the study area.

4. CONCLUSION

Yogyakarta area, which is dominated by volcanic-clastic sediments of Quarternary Young Merapi led to a layer of sand which reserve groundwater as a shallow aquifer. Shallow aquifer is very influential on the hazard due to the earthquake. Excellent correlation was shows between the shallowness of groundwater with the observational liquefaction data due to earthquake 26 May 2006. Almost the entire area of research (90%) have the liquefaction potential if assumed that the possible liquefaction reach 5.3m depth.

5. ACKNOWLEDGEMENT

Thanks to the team of open-well water table measurement and Geophysics Laboratory, UGM for funding this research.

6. REFERENCES

- [1] Sladen, J.A., D'Hollander, R.D., and Krahn, J., 1985. The Liquefaction of Sands, a Collapse Surface Approach, Canadian Geotechnical Journal, Vol22, No.4, pp.564-578.
- [2] Rahardjo, W., Sukandarrumidi & Rosidi, H.M.D. 1995. Geology Map : Yogyakarta Quadrangle Geological Map, Pusat Penelitian dan Pengembangan Geologi, Bandung.

- [3] Macdonald & Partners, Binnie & Partners, Hunting Technical Services Ltd. 1984. Greater Yogyakarta Groundwater Resources Study, Volume 13, Album of Map and Drawing, pp.10-23
- [4] Jefferies, M. and Been, K., 2006. "Soil Liquefaction, A Critical State Approach", Taylor and Francis Publishing Group, London and New York. Pp. 45-48
- [5] Anderson, L.R., Keaton, J.R., Aubry, K., and Ellis, S.J., 1982. Liquefaction Potential Map for Davis County, Utah, Department of Civil and Environmental Engineering, Utah State University, Logan, Utah
- [6] Lee, S.H.H., Ching, H.H., dan Muntohar, A.S. 2006. Study on Liquefaction Problem of Yogyakarta Area at 052706 Earthquake, Proceeding International Seminar and Symposium on Earthquake Engineering and Infrastructure & Building Retrofitting (EE & IBR), 28 Agustus 2006, Yogyakarta, 6-10
- [7] Soebowo, E., Tohari, A., dan Sarah, D., 2007. Study of Liquefaction potency at the Opak Fault zones, Patalan – Bantul, Yogyakarta. Proceeding of Geotechnology Seminar : Contribution of earthscience in the continuous development, (in Bahasa Indonesia), Bandung 3 Desember 2007 ISBN: 978-979-799-255-5
- [8] Adawiyah, R., 2008. Liquefaction Hazard Pattern at Yogyakarta Province (Case Study Yogyakarta Earthquake, 27 May 2006 (In Bahasa Indonesia), S1-Thesis, Departemen Geografi, FMIPA, Universitas Indonesia.
- [9] Hendrayana, H., 1993. Hydrogeologie und Grundwassergewinnung Im Yogyakarta – Becken, Indonesien. Dissertation, Rheinisch-Westfaelischen Technischen Hochschule Aachen, Germany.

INSTRUCTIONS TO CONTRIBUTORS

International Journal of Applied Sciences (IJAS) is publishing articles in all areas of applied sciences. IJAS seeks to promote and disseminate knowledge in the applied sciences, natural and social sciences industrial research materials science and technology, energy technology and society including impacts on the environment, climate, security, and economy, environmental sciences, physics of the games, creativity and new product development, professional ethics, hydrology and water resources, wind energy. IJAS is an academic peer reviewed on-line international journal of broad appeal aimed at fast publication of cutting edge multidisciplinary research articles reporting on original research across the fields of pure and applied sciences.

To build its International reputation, we are disseminating the publication information through Google Books, Google Scholar, Directory of Open Access Journals (DOAJ), Open J Gate, ScientificCommons, Docstoc and many more. Our International Editors are working on establishing ISI listing and a good impact factor for IJAS.

The initial efforts helped to shape the editorial policy and to sharpen the focus of the journal. Started with Volume 5, 2014, IJAS appears with more focused issues. Besides normal publications, IJAS intend to organized special issues on more focused topics. Each special issue will have a designated editor (editors) – either member of the editorial board or another recognized specialist in the respective field.

We are open to contributions, proposals for any topic as well as for editors and reviewers. We understand that it is through the effort of volunteers that CSC Journals continues to grow and flourish.

IJAS LIST OF TOPICS

The realm of International Journal of Applied Sciences (IJAS) extends, but not limited, to the following:

- Agricultura
- Audio
- Automotive Engineering
- Biological
- Bombs
- Building officials
- Chemical
- Combat Engineering
- Cryogenics
- Domestic Educational Technologies
- Energy
- Engineering geology
- Entertainment
- Environmental Engineering Science
- Environmental technology
- Fire Protection Engineering
- Fishing
- Food Technology
- Health Safety
- Industrial Technology
- Machinery
- Architectural
- Automotive
- Biochemical
- Biomedical
- Broadcast
- Ceramic
- Civil
- Construction
- Domestic appliances
- Domestic Technology
- Energy storage
- Enterprise
- Environmental
- Environmental Risk Assessment
- Financial Engineering
- Fisheries science
- Food
- Genetic
- Health Technologies
- Industry Business Informatics
- Manufacturing

- Marine Engineering
- Materials science and engineering
- Metallurgical
- Military Ammunition
- Military Technology and equipment
- Motor Vehicles
- Naval Engineering
- Nutrition
- Ontology
- Optics
- Pharmaceuticals
- Sanitary Engineering
- Textile
- Traffic
- Visual Technology
- Material Sciences
- Medical Technology
- Microtechnology
- Military Technology
- Mining
- Music
- Nuclear technology
- Ocean
- Optical
- Particle physics
- Safety Engineering
- Space Technology
- Tissue
- Transport
- Zoography

CALL FOR PAPERS

Volume: 5 - Issue: 2

i. Paper Submission: October 31, 2014

ii. Author Notification: November 30, 2014

iii. Issue Publication: December 2014

CONTACT INFORMATION

Computer Science Journals Sdn Bhd

B-5-8 Plaza Mont Kiara, Mont Kiara
50480, Kuala Lumpur, MALAYSIA

Phone: 006 03 6207 1607
006 03 2782 6991

Fax: 006 03 6207 1697

Email: cscpress@cscjournals.org

CSC PUBLISHERS © 2014
COMPUTER SCIENCE JOURNALS SDN BHD
B-5-8 PLAZA MONT KIARA
MONT KIARA
50480, KUALA LUMPUR
MALAYSIA
PHONE: 006 03 6204 5627
FAX: 006 03 6204 5628
EMAIL: cscpress@cscjournals.org